

# CERAPLUS 2 SOLUTIONS FOR THE HEALTHCARE SECTOR



## WHEN THE HIGHEST PRIORITY IS HYGIENE ...

---

For decades, Ideal Standard has been familiar with all vital challenges faced in the healthcare sector and has also initiated and promoted numerous advances.

The specific requirements in the hospital and nursing home sectors are our top priority in the development of our sanitary products. The new CERAPLUS 2 series meets all relevant hygiene criteria in the healthcare sector, especially with regard to drinking water hygiene. It offers superior safety, excellent product quality plus economical water and energy consumption. All CERAPLUS 2 fittings meet the requirements of DIN EN 806, with DVGW certification underway.

Efficiency, an outstanding price-performance ratio, proven durability under constant pressure, long-term supply of replacement parts and a comprehensive network of customer service representatives make CERAPLUS 2 an excellent choice.

The large selection of models in the CERAPLUS 2 series provides an ideal solution for all areas of application. When it comes to advanced fitting solutions for hospitals, rehabilitation clinics, retirement and nursing homes or medical offices, Ideal Standard is your collaboration and solutions partner.

---



---

# PRODUCT VARIETY FOR A WIDE RANGE OF APPLICATIONS

---

The large selection of models provides an ideal solution for all application areas.

The CERAPLUS 2 series has outstanding products for all areas featuring particularly high standards for hygiene and safety.



# UNDERSTANDING CHALLENGES – DEVELOPING SOLUTIONS

---

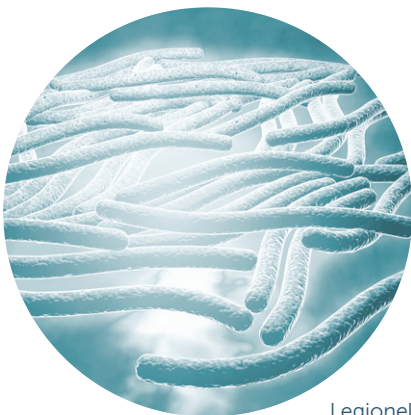
The problems that develop from nosocomial infections (infections that are acquired in healthcare establishments) have existed for as long as people have been treated in hospitals.

In modern medicine ever more invasive diagnostic and therapeutic procedures are being performed, in other words, procedures that penetrate the body. For patients, this poses the additional risk of nosocomial infections. Moreover, patients are becoming increasingly older, which usually goes hand in hand with the weakening of the body's immune system or immunosuppressive therapy.

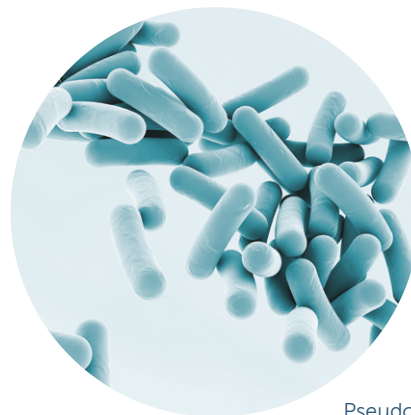
Exogenous infections, in other words infections that enter the patient's body from outside, also occur from direct contact with people who are carrying the pathogens, as well as from contaminated objects, transmission through respiratory air or water.

The health risks that result from Legionnaire's disease present a particular challenge when it comes to drinking water hygiene. The increased concentration of Legionella bacteria, which results primarily from stagnant water issues in the pipe system or at lower temperature levels of 20 to 45 degrees Celsius, is a serious health risk - especially for patients with a weakened immune system. It is necessary that appropriate measures be taken.

Ideal Standard has a multitude of solutions to help you!



Legionella pneumophila



Pseudomonas aeruginosa

---

---

# BATHROOMS IN HOSPITALS

---

The primary objective of hospital operators is quality, resource-efficiency and humane care for all patients. Patient rooms are a small yet important part of the big picture. In addition to a pleasant environment that promotes recovery, hygiene and drinking water hygiene are paramount.

The washing area consists of the Contour 21 wheelchair accessible washbasin with CERAPLUS 2 wall-washbasin thermostat: It can be thermally uncoupled and has a twist safety cartridge with adjustable temperature limiter and self-draining spout. The Ultra Flat ground level shower tub is equipped with an Idealrain Pro shower combo with a low-aerosol hand shower attachment. Features of the CERAPLUS 2 shower thermostat:

Thermally uncoupled and thermal disinfection. The shower hose drain valve empties the shower hose when the thermostat is closed.





---

## BATHROOMS IN CARE FACILITIES

---

The demographic change in European societies has far-reaching implications for the care sector. An increasing number of older people with very different physical and mental impairments are permanently reliant on support and care. This situation must be addressed in these establishments, which includes how bathrooms are equipped.

Ideal Standard's portfolio includes numerous products that are optimally adapted for barrier-free bathrooms in care facilities: the Ultra Flat ground level shower tub, Contour 21 wheelchair accessible washbasin, CERAPLUS 2 washbasin thermostat, shower combo Idealrain Pro, metal mount and shower head holder, with a low-aerosol hand shower and twist-proof Idealflex shower hose with a non-porous surface. The CERAPLUS 2 shower thermostat is thermally uncoupled and thermally disinfected; its Cool Body technology reduces the risk of burns caused by heated fittings.



---

# BATHROOMS IN RETIREMENT HOMES

---

Due to their age and limited mobility, residents in retirement homes are usually reliant on bathrooms that are easy, safe and barrier-free. Barrier-free access is indispensable for long-lasting preservation of a lifestyle that is as independent as possible.

Ideal Standard provides a large number of products that are customised for special requirements in retirement home bathrooms: the Ultra Flat ground level shower tub, Contour 21 wheelchair accessible washbasin, CERAPLUS 2 washbasin fittings Grande, also available with loop lever and clinique lever, Idealrain Pro shower combo, metal mount and shower holder, with a low-aerosol hand shower, CERAPLUS 2 shower thermostat with a shower hose drain valve.

The washbasin fittings can also be equipped with an angle valve thermostat ensuring easy thermal disinfection as well as optimum scald protection.



---

# THE THERMAL UNCOUPLING OF CERAPLUS 2 WALL-WASHBASIN THERMOSTATS

---

## INITIAL SITUATION

As water-based germs, the warm water side is an ideal habitat for Legionella and Pseudomonas. This is why in many places the water heaters are always set to a high temperature: in order to ensure a warm water supply that is as germ-free as possible.

## THE CHALLENGE

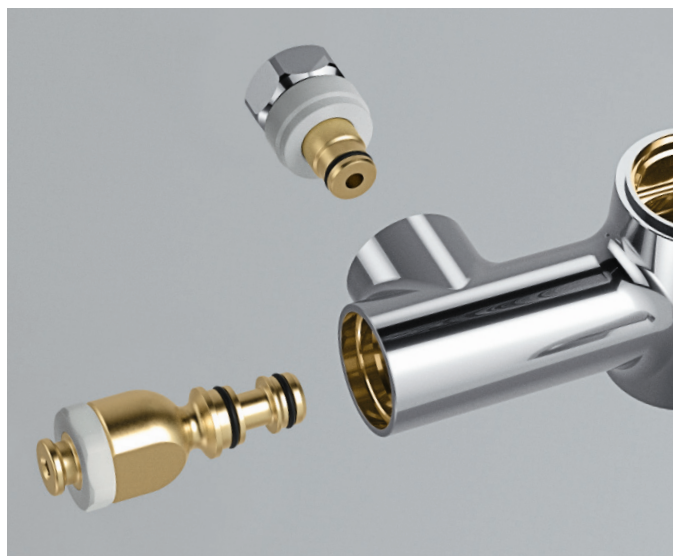
However, high temperatures on the warm water side often lead to a transfer of heat to the cold water side. Undesired heating of cold water can stem from an inadmissibly small installation clearance between the warm and cold water pipes or inadequate insulation, or it can be caused by heat transfer through the closed warm water and cold water fittings. This heat influx into the cold water line adds a new risk: the creation of a suitable breeding ground for Legionella and Pseudomonas that also encourages their growth.

## SOLUTION

The key feature of the CERAPLUS 2 thermostat is the significant reduction of transferred heat. The thermal uncoupling of water-bearing parts from the fitting body significantly aggravates the living conditions of Legionella and Pseudomonas on the cold water side. Highly insulating Teflon elements combined with backflow preventers on both the hot water and cold water sides are the reasons for this effectiveness. From a hygienic point of view, the design of the water feed demonstrates great advantages compared to other construction methods. This has also been verified by an expert's report by Prof. Dr. M. Exner, Director of the Institute for Hygiene and Public Health at the University of Bonn.



Wall-washbasin thermostat with fixed spout



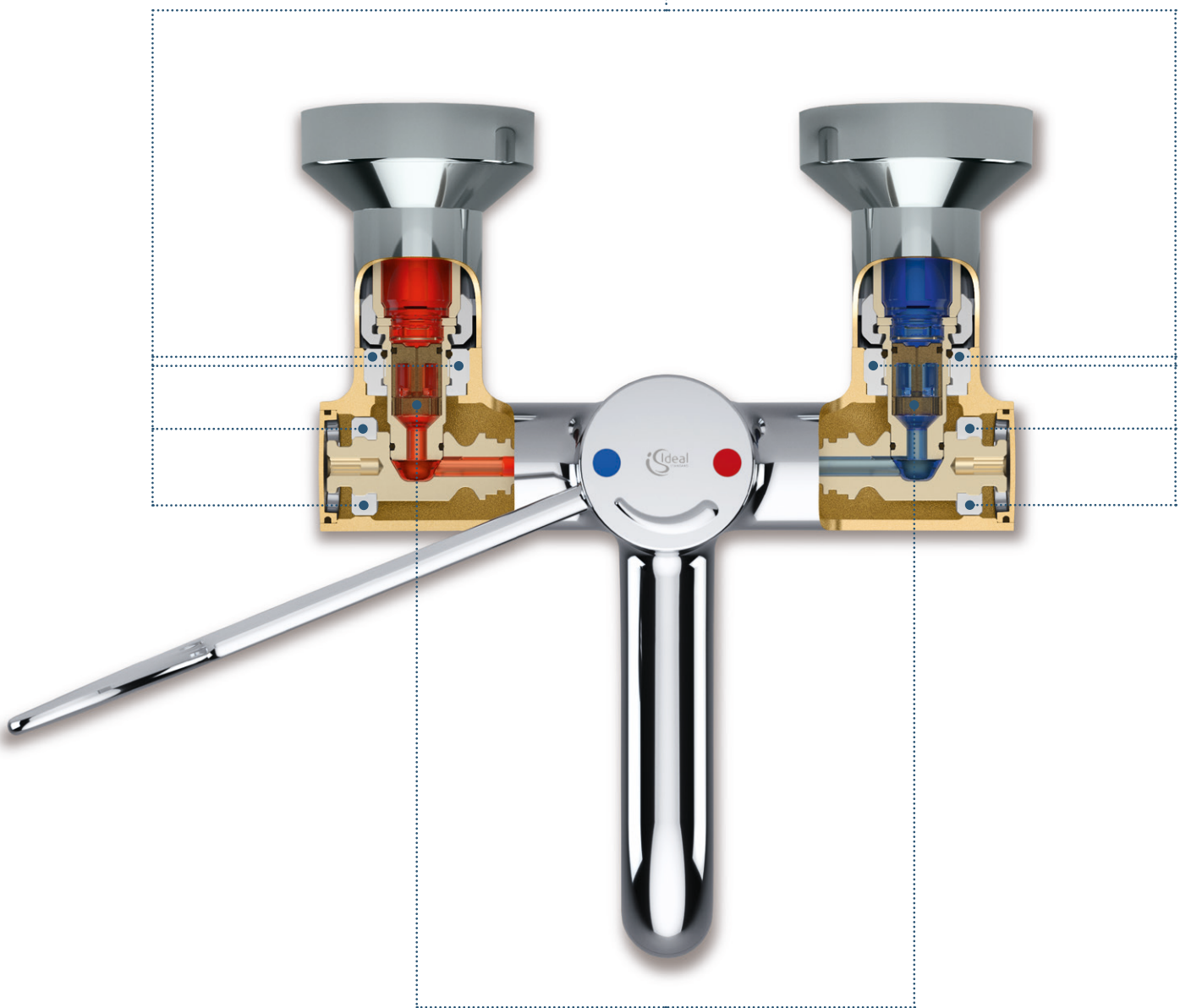
Water-bearing components with highly insulating Teflon elements

---



# OUR SOLUTION FOR REDUCING HEAT INFLUX ONTO THE COLD WATER SIDE

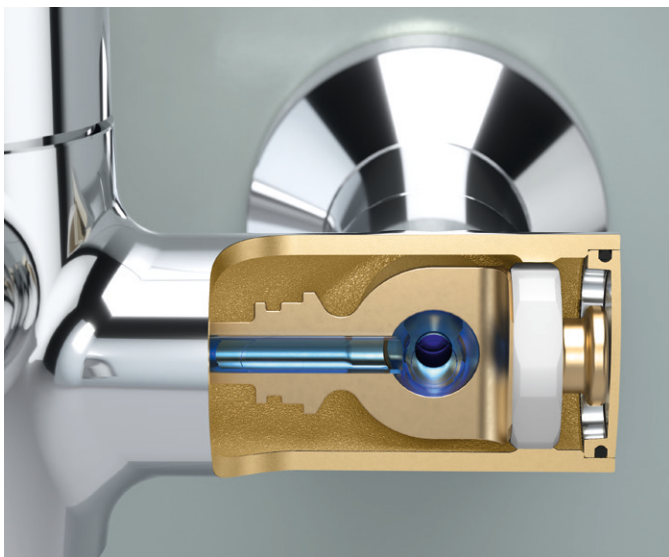
Highly insulating **Teflon elements** uncouple the water-bearing system from the body of the fitting.



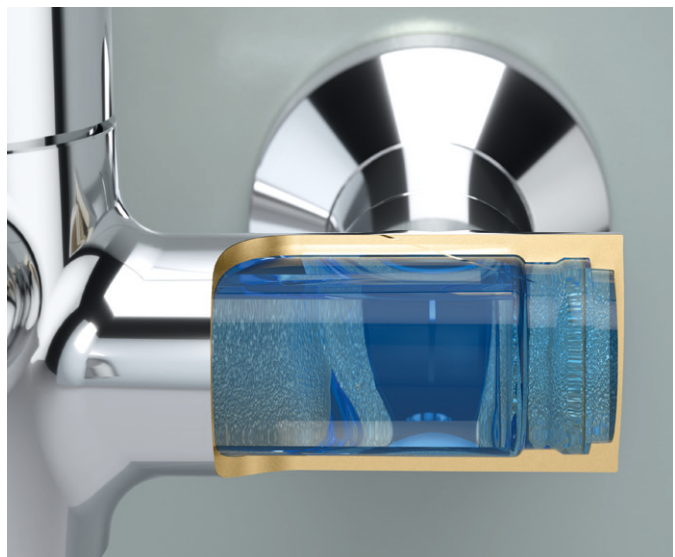
**Backflow prevention valves** ensure that no water can flow back out of the fitting into the supply lines.

## THE INNOVATIVE WATER-BEARING SYSTEM OF THE CERAPLUS 2 WALL-WASHBASIN THERMOSTATS

Optimised waterways with reduced diameters and twisted, completely smooth inner surfaces enable a high flow speed that counteracts the development of biofilms. Furthermore, stagnant water is considerably reduced compared to conventional fittings.



Reduced diameters increase flow speed and reduce stagnant water to 66 cm<sup>3</sup>.



A conventional fitting with a comparable fitting size has 117 cm<sup>3</sup> of stagnant water.

## BACTERIOSTATIC MATERIALS FOR ADDED HYGIENE

The new thermostatic cartridge features optimised amounts of brass and synthetic material. The high brass content reduces bacterial risks.



---

## THERMAL DISINFECTION – EFFECTIVE PROTECTION AGAINST LEGIONELLA AND PSEUDOMONAS

---



The handle features a handle cap that can be screwed off and a knurled screw that can be screwed on.

Thermal disinfection of all CERAPLUS 2 thermostats is exceptionally easy. After screwing off the handle cap, the included knurled screw is screwed on and pulled upwards. Simultaneously turning the lever to the right as far as it will go activates thermal disinfection. In doing so, the water temperature must be at least 70° C at the discharge point and the length of thermal disinfection is at least 3 minutes.

After disinfection is complete the fitting is closed, knurled screw removed and the handle cap is screwed back on. This does not change the highest temperature setting.

---

## THERMAL DISINFECTION VIA THE ANGLE VALVE THERMOSTAT

---

All CERAPLUS 2 washbasin fittings can also be equipped with an angle valve thermostat. It ensures optimum thermal disinfection as well as optimum scald protection.





## CERAPLUS 2 WALL-WASHBASIN THERMOSTAT

The wall-washbasin thermostat swivels, featuring a self-draining spout and low-aerosol, the tamper-proof stream shaper is thermally uncoupled, which effectively reduces heat transfer to the cold water line and is suitable for thermal disinfection.\* Its Soft Edge design minimises unnecessary edges thereby offering protection against impact injuries while allowing for quick and efficient cleaning. Like many models in the CERAPLUS 2 series, it is available with or without s-connectors that can be shut off; both models have the same outreach.

The spout is available in various lengths. THE FOLLOWING APPLIES TO ALL CeraPlus 2 products: 5 year warranty\*\* plus a 10-year availability guarantee. Plus, the company's own customer service centre provides assistance when needed.



\* The wall-washbasin thermostat is also available with fixed spout. This product variation can be found on the title page and on page 26.

\*\* When installed by a professional installer.

---

## CERAPLUS 2 WASHBASIN THERMOSTAT

---

The washbasin thermostat with its self-draining spout and low-aerosol, tamper-proof stream shaper, has a thermostatic twist safety cartridge with an adjustable temperature limiter and is suitable for thermal disinfection. Thanks to a factory pre-set maximum temperature, the washbasin thermostat provides effective protection against scalding: it shuts off automatically if the cold water supply malfunctions or if there are pressure fluctuations on the cold water side.





---

## CERAPLUS 2 BATH THERMOSTAT WITH LOW-AEROSOL HAND SHOWER

---

The bath thermostat is thermally uncoupled and thermally disinfected; its Cool Body technology reduces the risk of burns caused by heated fittings. The 1-function hand shower features low-aerosol operation. Chromed rosettes with wall seal and covered union nuts reduce the number of gaps thereby preventing any unseen pooling of water.





---

## CERAPLUS 2 SHOWER THERMOSTAT WITH LOW-AEROSOL HAND SHOWER

---

The Idealrain Pro shower combo consists of a shower rod with mount and a shower head holder made from metal, a low-aerosol hand shower and a CERAPLUS 2 shower thermostat with shower hose drain valve. The shower thermostat is thermally uncoupled and can be thermally disinfected; its Cool Body technology reduces the risk of burns caused by heated fittings.



# AN OVERVIEW OF ESSENTIAL FEATURES

---

## HYGIENE

### 1. LOW-AEROSOL STREAM SHAPER

The laminar water stream reduces aerosols.

### 2. SELF-DRAINING SPOUT

The spout drains completely after water is drawn. This significantly minimises the growth of bacteria.

### 3. THERMAL DISINFECTION

Thermostat fittings can be unlocked with a simple provided tool so that thermal disinfection can be performed quickly and securely.

### 4. THERMAL UNCOUPLING

Thermal uncoupling significantly minimises heat transfer from the warm water side to the cold water side thereby reducing the growth of Legionella and Pseudomonas.

### 5. MINIMISED WATERWAYS

Minimised waterways in the fittings increase flow speed and reduce the development of biofilms, while significantly reducing stagnant water.

## SAFETY

### 6. PERMANENT RED/BLUE MARKING

The permanent red/blue marking with a 0.2 mm paint application in a recess is clearly visible, detergent-resistant and long-lasting.

### 7. INTEGRATED HOT WATER TEMPERATURE LIMITER

Fittings with integrated hot water temperature limiter restrict the movement of the lever handle in the hot direction. This saves energy and provides security. The fittings provide optimised scald protection when combined with an angle valve thermostat.

### 8. NEW 38 MM FIRMAFLOW™-CARTRIDGE FOR SINGLE-LEVER MIXER

This cartridge is exceptionally robust and durable, having been tested with 500,000 cycles. The industry standard is 300,000 cycles.

### 9. THERMOSTATICALLY SECURED WASHBASIN FITTINGS WITH TWIST SAFETY CARTRIDGE

Thanks to a factory pre-set maximum temperature, thermostatically secured fittings provide effective protection against scalding. They always open in the cold water zone and shut off automatically if the cold water supply malfunctions. The pre-set maximum temperature can be changed later as desired.

### 10. COOL BODY

Thermostats equipped with Cool Body Technology heat up significantly less when the fitting is open, thereby significantly reducing the risk of burns.

---

			Permanent red/blue marking	Low-aerosol, tamper-proof stream shaper	Self-draining spout	Integrated hot water temperature limiter	New 38 mm FirmaFlow <sup>TM</sup> cartridge	Thermostatic twist safety cartridge with adjustable temperature limiter	Thermal disinfection	Thermal uncoupling/minimised waterways	Thermal uncoupling	Cool Body	
Washbasin fitting	BC091AA	c	c	c	c	c					c		Page 20
Washbasin fitting	BC092AA	c	c	c	c	c					c		Page 20
Washbasin fitting ND	BC093AA	c	c	c	c	c					c		Page 20
Washbasin fitting ND	BC094AA	c	c	c	c	c					c		Page 20
Washbasin fitting	BC095AA	c	c	c	c	c					c		Page 20
Washbasin fitting	BC096AA	c	c	c	c	c					c		Page 20
Washbasin fitting	BC097AA	c	c	c	c	c					c		Page 20
Washbasin fitting	BC098AA	c	c	c	c	c					c		Page 20
Washbasin fitting Grande	BC099AA	c	c	c	c	c					c		Page 21
Washbasin fitting Grande	BC100AA	c	c	c	c	c					c		Page 21
Washbasin fitting Grande ND	BC101AA	c	c	c	c	c					c		Page 21
Washbasin fitting Grande ND	BC102AA	c	c	c	c	c					c		Page 21
Washbasin fitting Grande	BC103AA	c	c	c	c	c					c		Page 21
Washbasin fitting Grande	BC104AA	c	c	c	c	c					c		Page 21
Washbasin fitting Grande	BC105AA	c	c	c	c	c					c		Page 21
Washbasin fitting Grande	BC106AA	c	c	c	c	c					c		Page 21
Washbasin thermostat	A6692AA	c	c	c			c	c			c		Page 22
Pillar tap	BC117AA			c									Page 22
Wall-washbasin fitting	BC108AA	c	c	c	c	c					c		Page 22
Wall-washbasin fitting	BC109AA	c	c	c	c	c					c		Page 23
Wall-washbasin fitting	BC110AA	c	c	c	c	c					c		Page 23
Wall-washbasin fitting	BC111AA	c	c	c	c	c					c		Page 23
Wall-washbasin fitting	BC112AA	c	c	c	c	c					c		Page 23
Wall-washbasin fitting	BC113AA	c	c	c	c	c					c		Page 23
Wall-washbasin fitting	BC114AA	c	c	c	c	c					c		Page 23
Wall-washbasin fitting	BC115AA	c	c	c	c	c					c		Page 23
Wall-washbasin fitting	BC116AA	c	c	c	c	c					c		Page 23
Shower fitting surface-mounted	BC118AA	c			c	c							Page 24
Shower thermostat surface-mounted	A6870AA	c					c		c	c			Page 24
Shower thermostat surface-mounted	A6871AA	c					c		c	c			Page 24
Shower thermostat surface-mounted	A6872AA	c					c		c	c			Page 24
Bath thermostat surface-mounted	A6872AA	c					c		c	c			Page 24
Bath thermostat surface-mounted	A6874AA	c					c		c	c			Page 24
Shower fitting flush-mounted	A6865AA	c			c								Page 25
Bath fitting flush-mounted	A6866AA	c			c								Page 25
Shower thermostat flush-mounted	A6868AA	c					c						Page 25
Bath thermostat flush-mounted	A6869AA	c					c						Page 26
Wall-washbasin thermostat	A6691AA	c	c	c			c	c	c		c	c	Page 26
Wall-washbasin thermostat	A6690AA	c	c	c			c	c	c		c	c	Page 26
Wall-washbasin thermostat	A6699AA	c	c	c			c	c	c		c	c	Page 26
Wall-washbasin thermostat	A6702AA	c	c	c			c	c	c		c	c	Page 26
Wall-washbasin thermostat	A6700AA	c	c	c			c	c	c		c	c	Page 27
Wall-washbasin thermostat	A6703AA	c	c	c			c	c	c		c	c	Page 27
Wall-washbasin thermostat	A6701AA	c	c	c			c	c	c		c	c	Page 27
Wall-washbasin thermostat	A6704AA	c	c	c			c	c	c		c	c	Page 27
Angle valve thermostat	A5776AA				c		c						Page 27





# TECHNICAL SPECIFICATIONS

PRODUCT DESCRIPTIONS  
AND DIMENSIONED DRAWINGS

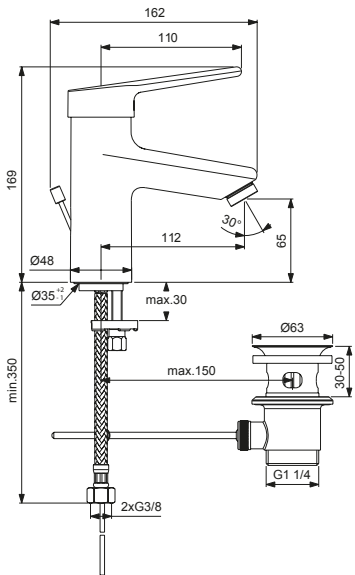
---

WASHBASIN FITTINGS



Model	Order no.
Washbasin fitting with metal drain	BC091AA
Washbasin fitting without drain fitting	BC092AA
Washbasin fitting ND with metal drain	BC093AA
Washbasin fitting ND without drain fitting	BC094AA

- Fixed, self-draining, nickel-free spout
- Low-aerosol, tamper-proof stream breaker
- Permanent red/blue marking
- 38 mm cartridge
- Integrated hot water temperature limiter
- Flexible connecting hose
- Mounting from below (Easy Fix)



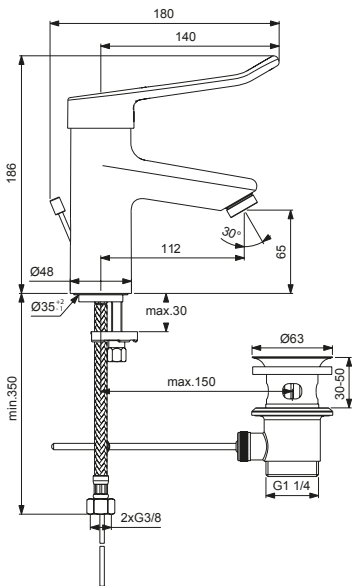
BC091AA

WASHBASIN FITTING WITH LOOP LEVER



Model	Order no.
Washbasin fitting with loop lever and metal drain	BC095AA
Washbasin fitting with loop lever and without drain fitting	BC096AA

- Fixed, self-draining, nickel-free spout
- Low-aerosol, tamper-proof stream breaker
- Permanent red/blue marking
- 38 mm cartridge
- Integrated hot water temperature limiter
- Flexible connecting hose
- Mounting from below (Easy Fix)



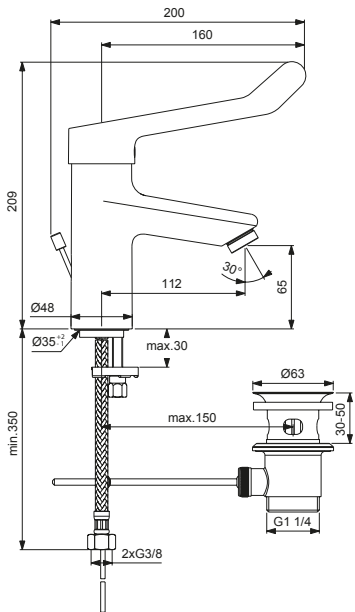
BC095AA

WASHBASIN FITTING WITH CLINIQUE LEVER



Model	Order no.
Washbasin fitting with clinique lever and metal drain	BC097AA
Washbasin fitting with clinique lever and without drain fitting	BC098AA

- Fixed, self-draining, nickel-free spout
- Low-aerosol, tamper-proof stream breaker
- Permanent red/blue marking
- 38 mm cartridge
- Integrated hot water temperature limiter
- Flexible connecting hose
- Mounting from below (Easy Fix)



BC097AA

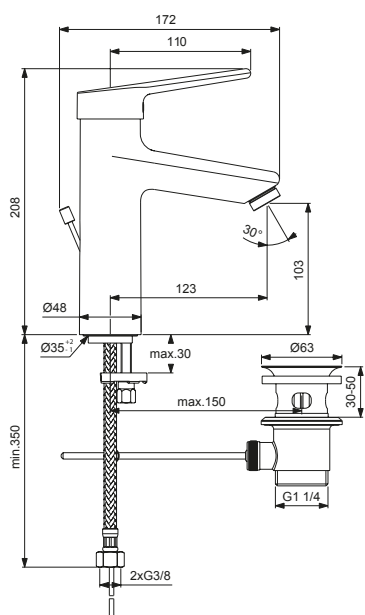


## WASHBASIN FITTING GRANDE



Model	Order no.
Washbasin fitting Grande with metal drain	BC099AA
Washbasin fitting Grande without drain fitting	BC100AA
Washbasin fitting Grande ND Low pressure with metal drain	BC101AA
Washbasin fitting Grande ND Low pressure without drain fitting	BC102AA

- Fixed, self-draining, nickel-free spout
- Low-aerosol, tamper-proof stream breaker
- Permanent red/blue marking
- 38 mm cartridge
- Integrated hot water temperature limiter
- Flexible connecting hose
- Mounting from below (Easy Fix)



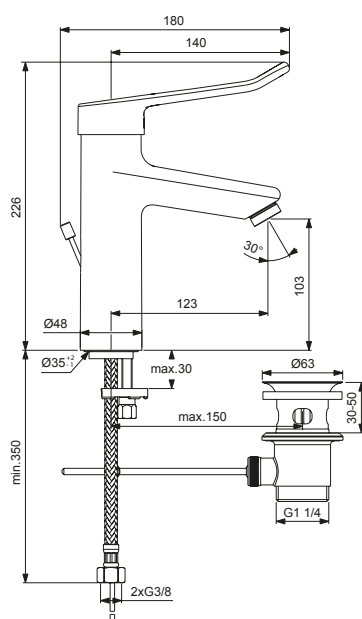
BC099AA

## WASHBASIN FITTING GRANDE WITH LOOP LEVER



Model	Order no.
Washbasin fitting Grande with loop lever and metal drain	BC103AA
Washbasin fitting Grande with loop lever and without drain fitting	BC104AA

- Fixed, self-draining, nickel-free spout
- Low-aerosol, tamper-proof stream breaker
- Permanent red/blue marking
- 38 mm cartridge
- Integrated hot water temperature limiter
- Flexible connecting hose
- Mounting from below (Easy Fix)



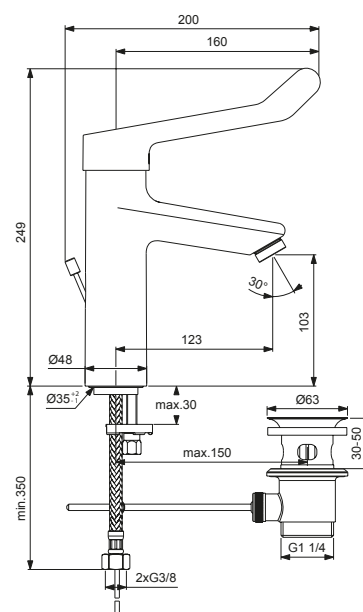
BC103AA

## WASHBASIN FITTING GRANDE WITH CLINIQUE LEVER



Model	Order no.
Washbasin fitting Grande with clinique lever and metal drain	BC105AA
Washbasin fitting Grande with clinique lever, without drain fitting	BC106AA

- Fixed, self-draining, nickel-free spout
- Low-aerosol, tamper-proof stream breaker
- Permanent red/blue marking
- 38 mm cartridge
- Integrated hot water temperature limiter
- Flexible connecting hose
- Mounting from below (Easy Fix)



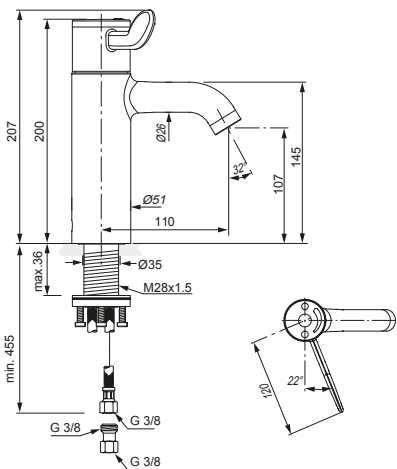
BC105AA

WASHBASIN THERMOSTAT  
FOR STANDING INSTALLATION



Model	Order no.
Washbasin thermostat for standing installation	A6692AA

- Fixed, self-draining, nickel-free spout
- Low-aerosol, tamper-proof stream breaker
- Permanent red/blue marking
- Integrated hot water temperature limiter
- Suitable for thermal disinfection
- Backflow preventer
- DVGW intrinsically safe



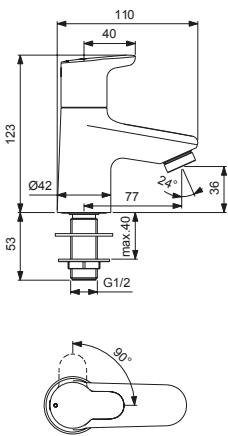
A6692AA

PILLAR TAP



Model	Order no.
Pillar tap	BC117AA

- Fixed, self-draining, nickel-free spout
- Low-aerosol, tamper-proof stream breaker
- Permanent blue marking



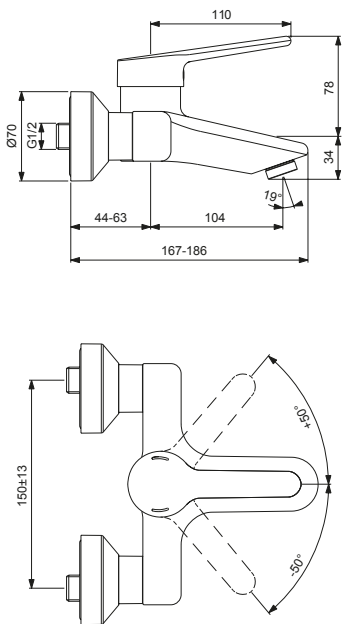
BC117AA

WALL-WASHBASIN FITTING



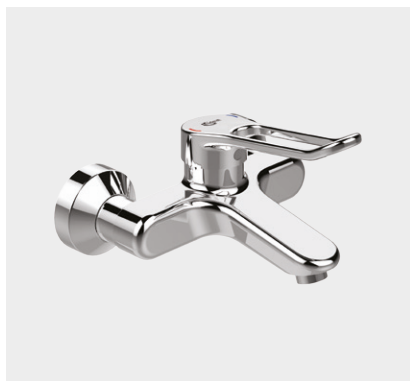
Model	Order no.
Wall-washbasin fitting	BC108AA

- Fixed, self-draining, nickel-free spout
- Low-aerosol, tamper-proof stream breaker
- Permanent red/blue marking
- 38 mm cartridge
- Rosettes with wall seal
- Integrated hot water temperature limiter



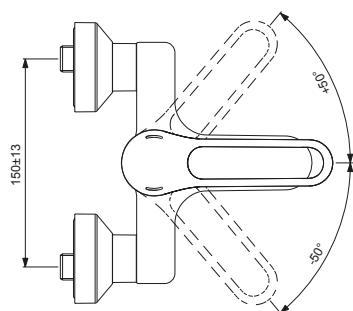
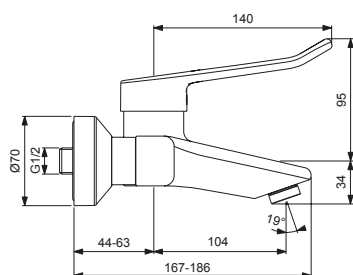
BC108AA

## WALL-WASHBASIN FITTING WITH LOOP LEVER



Model	Order no.
<b>Wall-washbasin fitting with loop lever</b>	<b>BC109AA</b>

- Fixed, self-draining, nickel-free spout
- Low-aerosol, tamper-proof stream breaker
- Permanent red/blue marking
- 38 mm cartridge
- Rosettes with wall seal
- Integrated hot water temperature limiter



BC109AA

## WALL-WASHBASIN FITTING SURFACE-MOUNTED



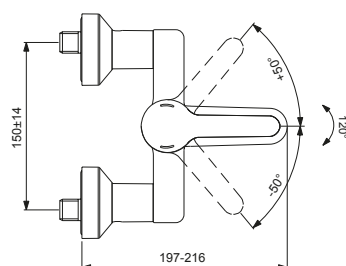
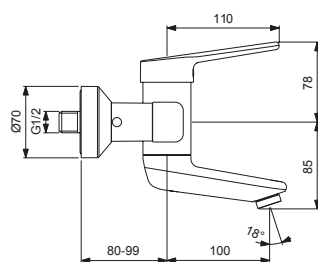
Model	Order no.
<b>Wall-washbasin fitting</b>	<b>BC110AA</b>
Surface-mounted with shut-off S-connectors, spout 100 mm	

<b>Wall-washbasin fitting</b>	<b>BC111AA</b>
Surface-mounted with shut-off S-connectors, spout 150 mm	

<b>Wall-washbasin fitting</b>	<b>BC112AA</b>
Surface-mounted with shut-off S-connectors, spout 200 mm	

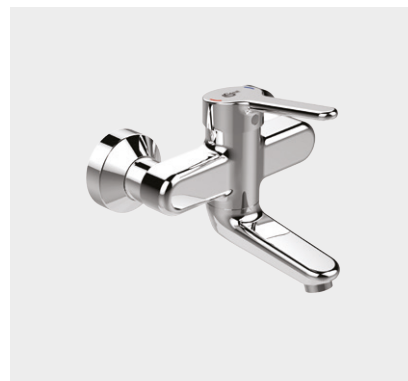
<b>Wall-washbasin fitting</b>	<b>BC113AA</b>
Surface-mounted with shut-off S-connectors, spout 250 mm	

- Swivel, triple adjustable, self-draining, nickel-free spout
- Low-aerosol, tamper-proof stream breaker
- Permanent red/blue marking
- 38 mm cartridge
- Rosettes with wall seal
- Integrated hot water temperature limiter



BC110AA

## WALL-WASHBASIN FITTING SURFACE-MOUNTED

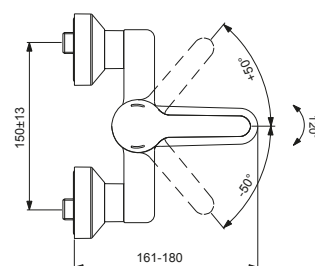
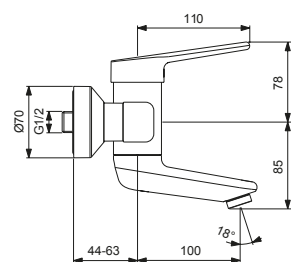


Model	Order no.
<b>Wall-washbasin fitting</b>	<b>BC114AA</b>
Surface-mounted, spout 100 mm	

<b>Wall-washbasin fitting</b>	<b>BC115AA</b>
Surface-mounted, spout 150 mm	

<b>Wall-washbasin fitting</b>	<b>BC116AA</b>
Surface-mounted, spout 200 mm	

- Swivel, triple adjustable, self-draining, nickel-free spout
- Low-aerosol, tamper-proof stream breaker
- Permanent red/blue marking
- 38 mm cartridge
- Rosettes with wall seal
- Integrated hot water temperature limiter



BC114AA



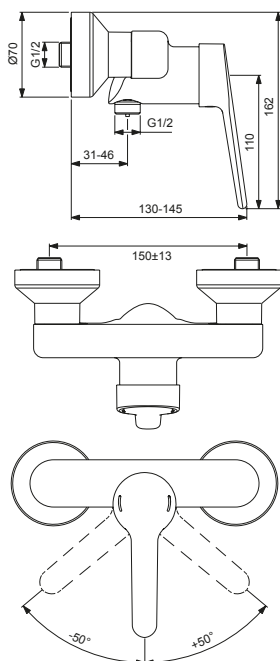
## SHOWER FITTING SURFACE-MOUNTED



Model Order no.

### Shower fitting surface-mounted BC118AA

- Permanent red/blue marking
- S-connectors and union nuts concealed by wall seal
- 38 mm cartridge
- Integrated hot water temperature limiter



BC118AA

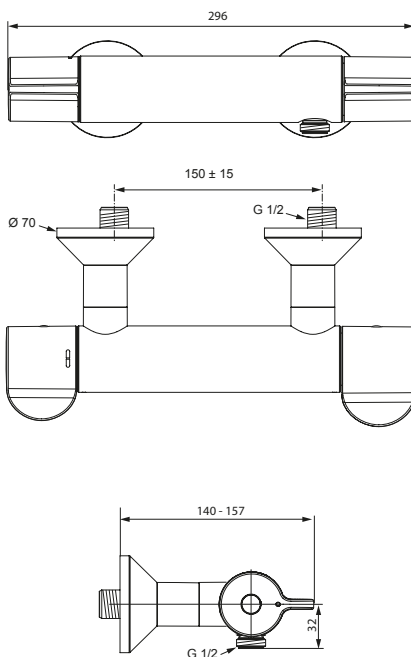
## SHOWER THERMOSTAT SURFACE-MOUNTED



Model Order no.

### Shower thermostat surface-mounted A6870AA with shut-off S-connectors, thermal disinfection & uncoupling

- Cool Body
- Suitable for thermal disinfection with special tool provided
- Backflow preventer
- DVGW intrinsically safe
- Permanent red/blue marking
- Thermostat cartridge
- Rosettes with wall seal
- Metal handles



A6870AA

## BATH THERMOSTAT SURFACE-MOUNTED

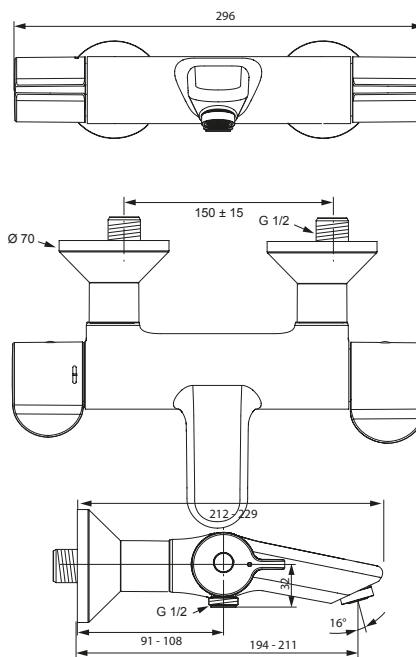


Model Order no.

### Bath thermostat wall-mounted A6874AA with shut-off S-connectors, thermal disinfection & uncoupling

### Bath thermostat wall-mounted A6873AA with thermal disinfection & uncoupling

- Cool Body
- Suitable for thermal disinfection with special tool provided
- Backflow preventer
- DVGW intrinsically safe
- Permanent red/blue marking
- Thermostat cartridge
- Rosettes with wall seal
- Laminar stream shaper in tamper-proof casing
- Metal handles



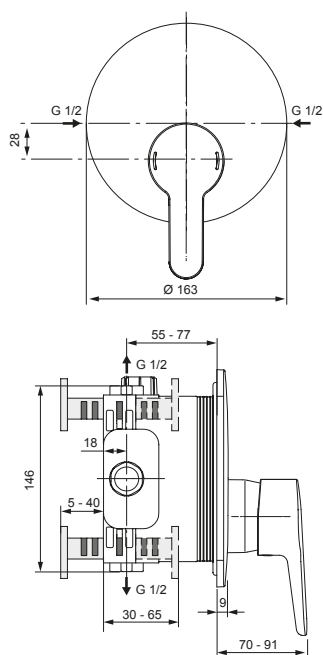
A6873AA

## SHOWER FITTING FLUSH-MOUNTED



Model Order no.  
**Shower fitting flush-mounted** **A6865AA**  
 Assembly kit 2

- Permanent red/blue marking
- 47 mm CLICK-cartridge
- Integrated hot water temperature limiter
- Metal rosette



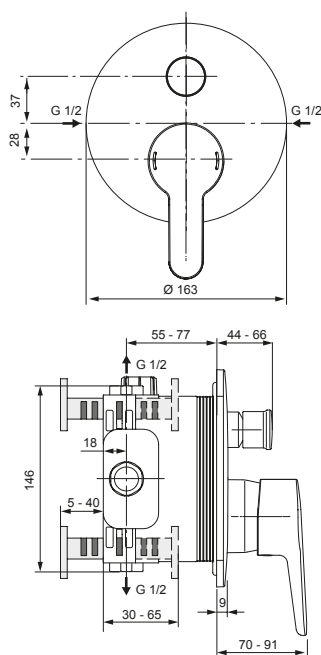
A6865AA

## BATH FITTING FLUSH-MOUNTED



Model Order no.  
**Bath fitting flush-mounted** **A6866AA**  
 Assembly kit 2

- Permanent red/blue marking
- 47 mm CLICK-cartridge
- Integrated hot water temperature limiter
- Metal rosette



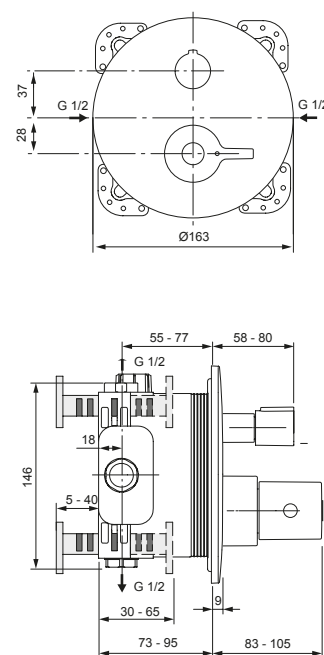
A6866AA

## SHOWER THERMOSTAT FLUSH-MOUNTED



Model Order no.  
**Shower thermostat flush-mounted**  
**A6868AA**  
 Assembly kit 2 with thermal disinfection

- Suitable for thermal disinfection with special tool provided
- Backflow preventer
- Thermostat cartridge
- Integrated hot water temperature limiter
- Metal rosette
- Metal handles



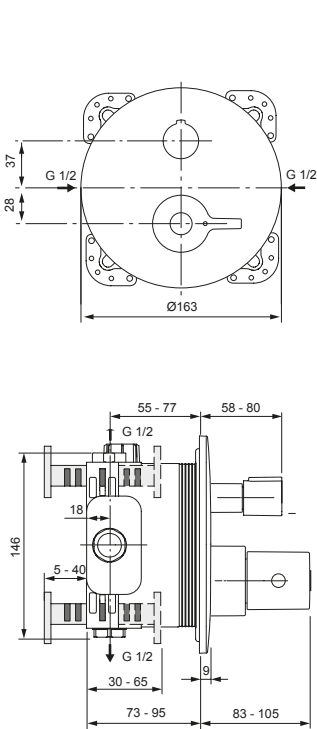
A6868AA

BATH THERMOSTAT  
FLUSH-MOUNTED



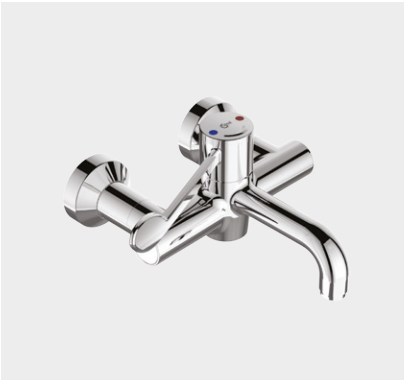
Model	Order no.
Bath thermostat flush-mounted A6869AA Assembly kit 2 with thermal disinfection	

- Suitable for thermal disinfection with special tool provided
- Backflow preventer
- Thermostat cartridge
- Integrated hot water temperature limiter
- Metal rosette
- Metal handles



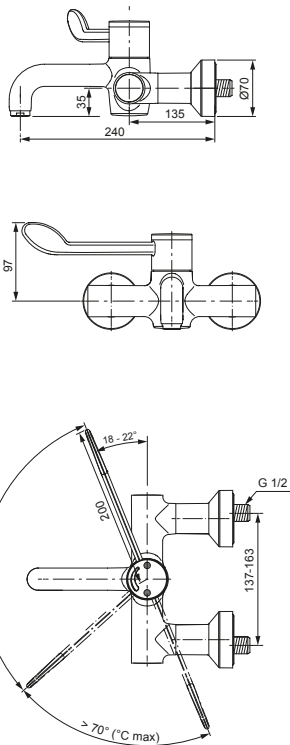
A6869AA

WALL-WASHBASIN  
THERMOSTAT



Model	Order no.
Wall-washbasin thermostat with shut-off S-connectors	A6691AA
Wall-washbasin thermostat	A6690AA

- Fixed, self-draining, nickel-free spout with stream breaker
- Laminar water stream
- Permanent red/blue marking
- Thermostatically secured twist safety cartridge with adjustable temperature limiter
- Suitable for thermal disinfection with special tool provided
- Thermal uncoupling
- Rosettes with wall seal
- Opens from cold to warm turning to the right



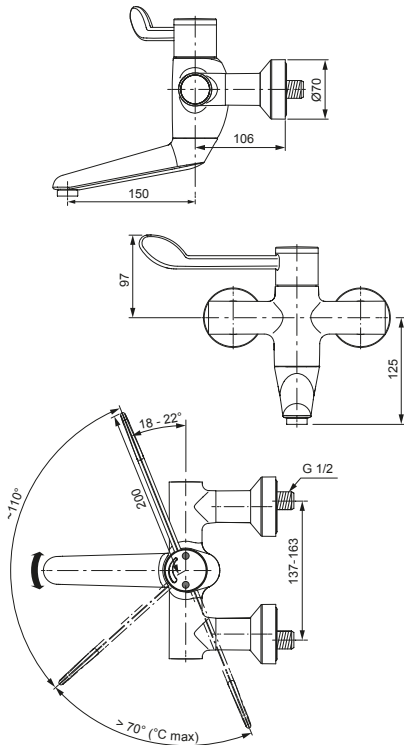
A6691AA

WALL-WASHBASIN  
THERMOSTAT



Model	Order no.
Wall-washbasin thermostat with shut-off S-connectors, spout 150 mm	A6699AA
Wall-washbasin thermostat Spout 150 mm	A6702AA

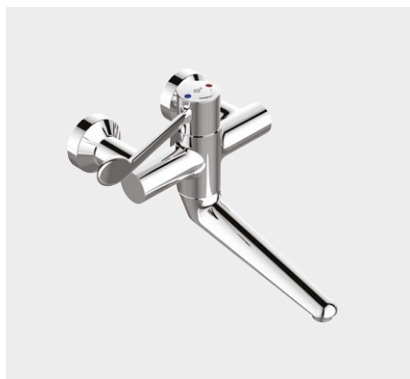
- Self-draining, nickel-free swivel spout (fixed, +/- 45°, +/-180°)
- Laminar water stream
- Permanent red/blue marking
- Thermostatically secured twist safety cartridge with adjustable temperature limiter
- Suitable for thermal disinfection with special tool provided
- Thermal uncoupling
- Rosettes with wall seal
- Opens from cold to warm turning to the right



A6699AA



## WALL-WASHBASIN THERMOSTAT

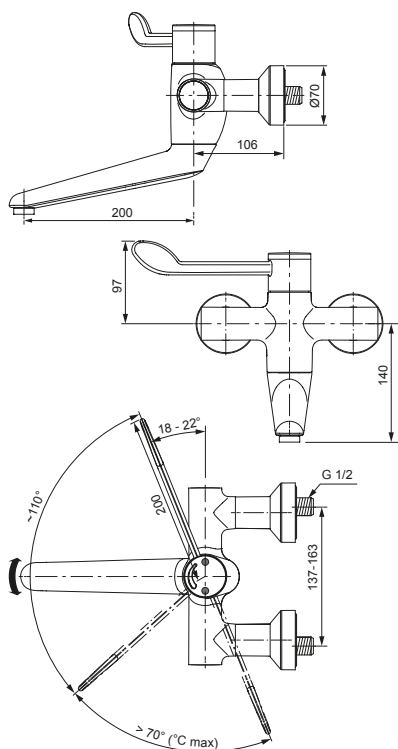


Model Order no.

**Wall-washbasin thermostat** **A6700AA**  
with shut-off S-connectors,  
spout 200 mm

**Wall-washbasin thermostat** **A6703AA**  
Spout 200 mm

- Self-draining, nickel-free swivel spout (fixed, +/- 45°, +/-180°)
- Laminar water stream
- Permanent red/blue marking
- Thermostatically secured twist safety cartridge with adjustable temperature limiter
- Suitable for thermal disinfection with special tool provided
- Thermal uncoupling
- Rosettes with wall seal
- Opens from cold to warm turning to the right



A6700AA

## WALL-WASHBASIN THERMOSTAT

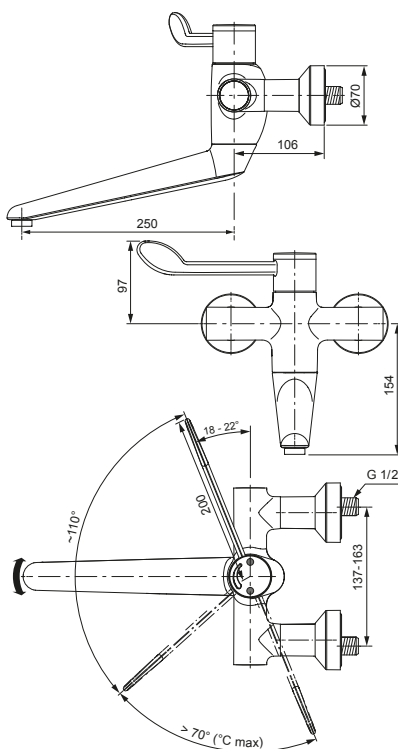


Model Order no.

**Wall-washbasin thermostat** **A6701AA**  
with shut-off S-connectors,  
spout 250 mm

**Wall-washbasin thermostat** **A6704AA**  
Spout 250 mm

- Self-draining, nickel-free swivel spout (fixed, +/- 45°, +/-180°)
- Laminar water stream
- Permanent red/blue marking
- Thermostatically secured twist safety cartridge with adjustable temperature limiter
- Suitable for thermal disinfection with special tool provided
- Thermal uncoupling
- Rosettes with wall seal
- Opens from cold to warm turning to the right



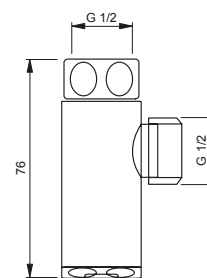
A6701AA

## SHOWER HOSE DRAINING VALVE



Model Order no.

**Shower hose draining valve** **F2605AA**



F2605AA

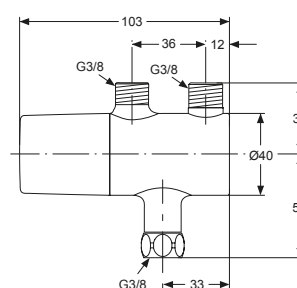
## ANGLE VALVE THERMOSTAT



Model Order no.

**Angle valve thermostat** **A5776AA**

**Connection set** **A5777AA**  
for angle valve thermostat



A5776AA

**Ideal Standard-Vidima AD**

53 Marin Popov Street  
5400 Sevlievo, Bulgaria  
Tel: +359 675 30362  
office@idealstandard.com

**Representative office, Riga**

A. Briana str. 9a,  
Riga, LV- 1001, Latvia  
Tel: +371 673 57 792  
Fax: +371 673 57 795  
vdorogoi@idealstandard.com

**Representative Office, Bucharest**

Cotroceni Business Center  
Bd. Iuliu Maniu, nr 7, corp T,  
Floor 2, office A1, Sector 6  
061072 Bucharest, Romania  
Tel/Fax: +40 21 322 3201

**Representative office, Belgrade**

Drinčićeva no.19, apartment no.8  
11000 Belgrade, Serbia  
Tel/Fax: + 381 11 7138 058  
+ 381 11 7138 059  
obelgrade@idealstandard.com

**Representative Office, Budapest**

IS-Hun Kft  
1221 Budapest, Hungary  
Aranyfácán u 20  
Tel: + 36 30 6991 594  
zgarai@idealstandard.com

**Contact for Albania, Kosovo**

and Bosnia & Herzegovina  
Tel: +359 887709696  
imichev@idealstandard.com

**Contact for Croatia**

Mobile: +38591 22 99 304  
hpavicic@idealstandard.com

**Contact for Slovenia**

Tel: +39 040 2158058  
info@liaison.it